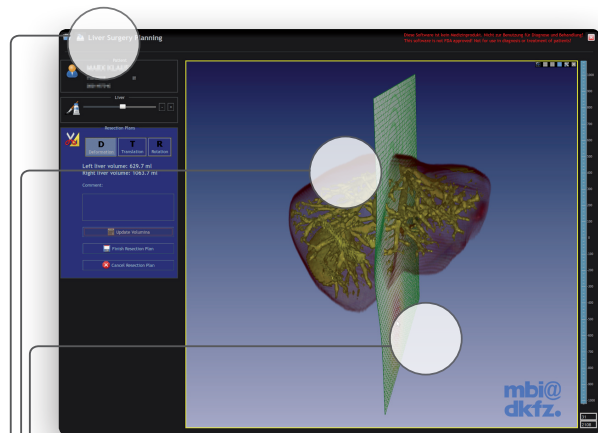


### mint Liver Product Overview

**mint Liver** offers valuable and efficient methods and workflows to support diagnosis and therapy planning of liver diseases. By using advanced PACS interfaces and fully automated analysis of your image data, **mint Liver** finishes tedious image processing tasks before you even start to diagnose your patient.

During therapy planning, a palette of intuitive tools provides you with the opportunity to model and compare various, alternative therapy strategies in a short time to assess the best possible treatment for your patient.



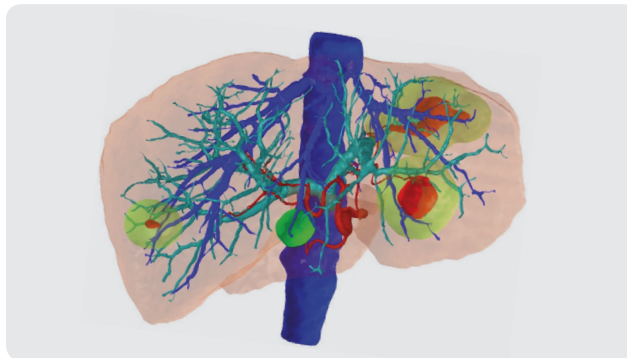
**Smooth integration into your clinical workflow** by optimal integration in your existing software platform

**Fully automatic liver analysis** for high quality visualization and volumetric analysis

**Easy definition of resection strategies** enables you to update your resection plan even during OR

Are you interested in a consultation for individual advice, a trial version of **mint Liver** or a presentation?

Please feel free to contact us, we are happy to provide further advice.



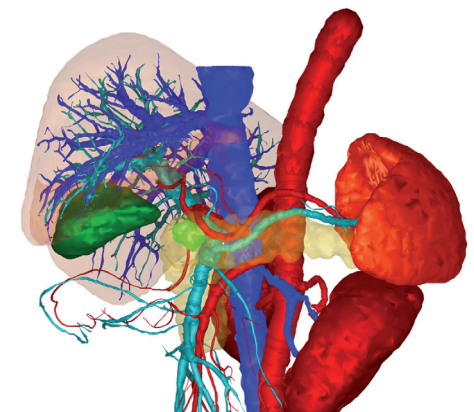
### mint Liver Contact us!



**Mint Medical GmbH**  
Im Neuenheimer Feld 582  
D-69120 Heidelberg  
Germany

**Contact** [info@mint-medical.com](mailto:info@mint-medical.com)

[www.mint-medical.com](http://www.mint-medical.com)



### mint Liver

Your solution for advanced liver diagnostics and therapy planning

Developed in cooperation with:



**mint Liver Benefits**

**mint Liver** supports your diagnosis and treatment planning with innovative and efficient image processing tools.

Whether you are planning a segment resection or evaluating the volumetries of donors and donees for a living liver transplantation – **mint Liver** supports you with intuitive 3D imaging of the individual liver anatomy as well as with the assessment of different therapy strategies.

**Your benefits:**

- Improved diagnosis quality and efficiency
- Detailed analysis and visualization of your patient's anatomy for you, the patient, and your surgeons
- Fully automated image analysis providing you with efficient and time-saving workflows
- Risk analysis and assessment of resection strategies for an optimal treatment plan
- Customizable reports communicate your work to patients and colleagues

**mint Liver Workflow**

